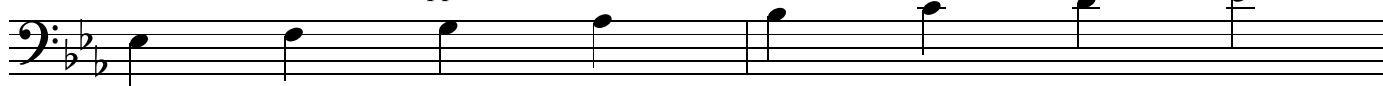


# E♭ SIGHT-READING + RHYTHM EXERCISES

## Level 1

Bass Clef Instruments - Upper Octave - "C" Scale



All of the following exercises utilize notes from the key of "E♭".

The quarter rest is equivalent in value to a quarter note. (1 beat)

When writing in the counts, you would write the number for rests ABOVE the rest.

Also make sure not to actually say the number associated with the rest, just THINK it.

3 **A** 4 3

1 2 + 3 1 + 2 4

7 **B**

11 **C**

15 **D**

19 **E**

23 **F**